

Genes in SCC summary

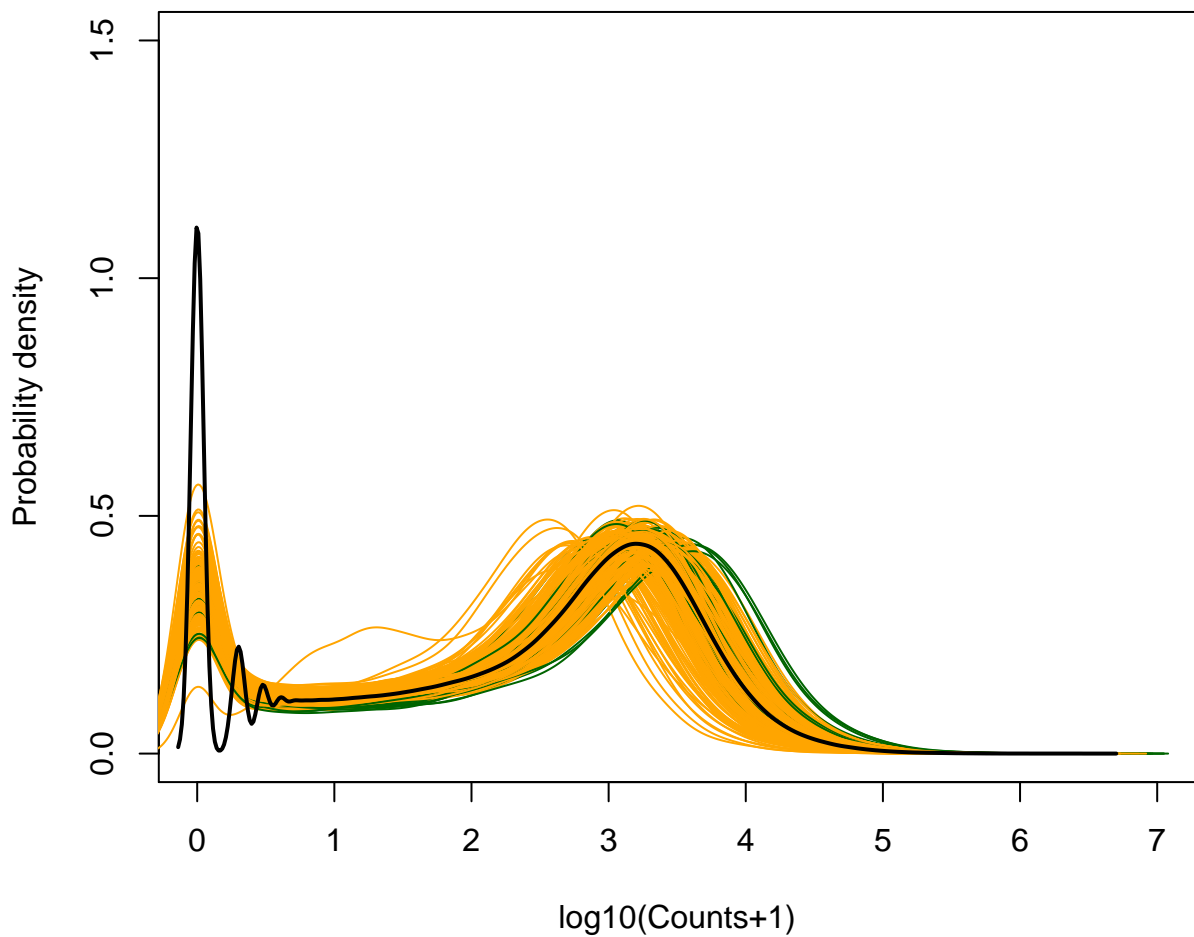
Number of samples (processed files): 534

of which TP(primary) / NT(normal) : 484 / 50

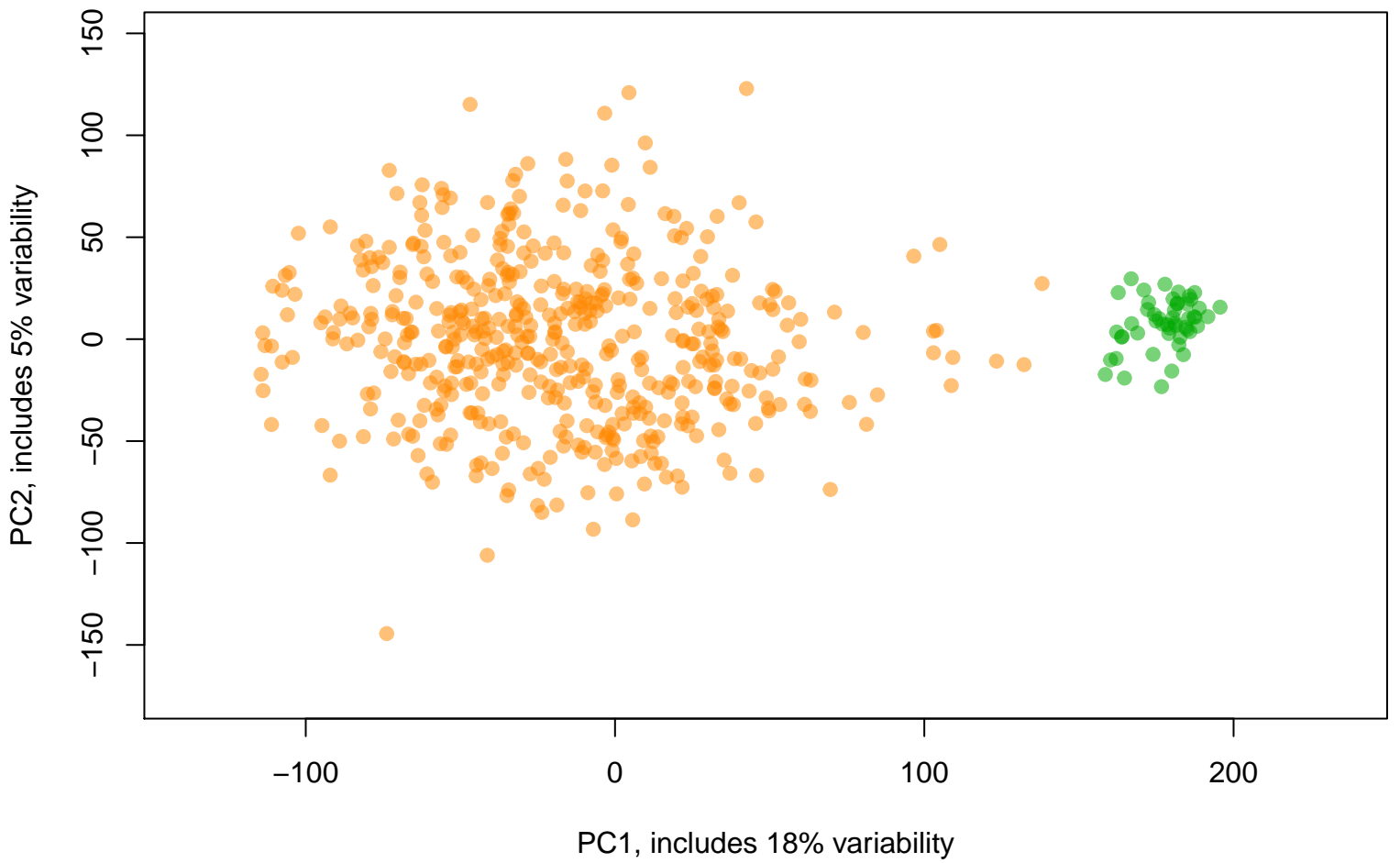
Number of genes: 20531

annotation from data file and TCGA.Sept2010.09202010.gaf is used

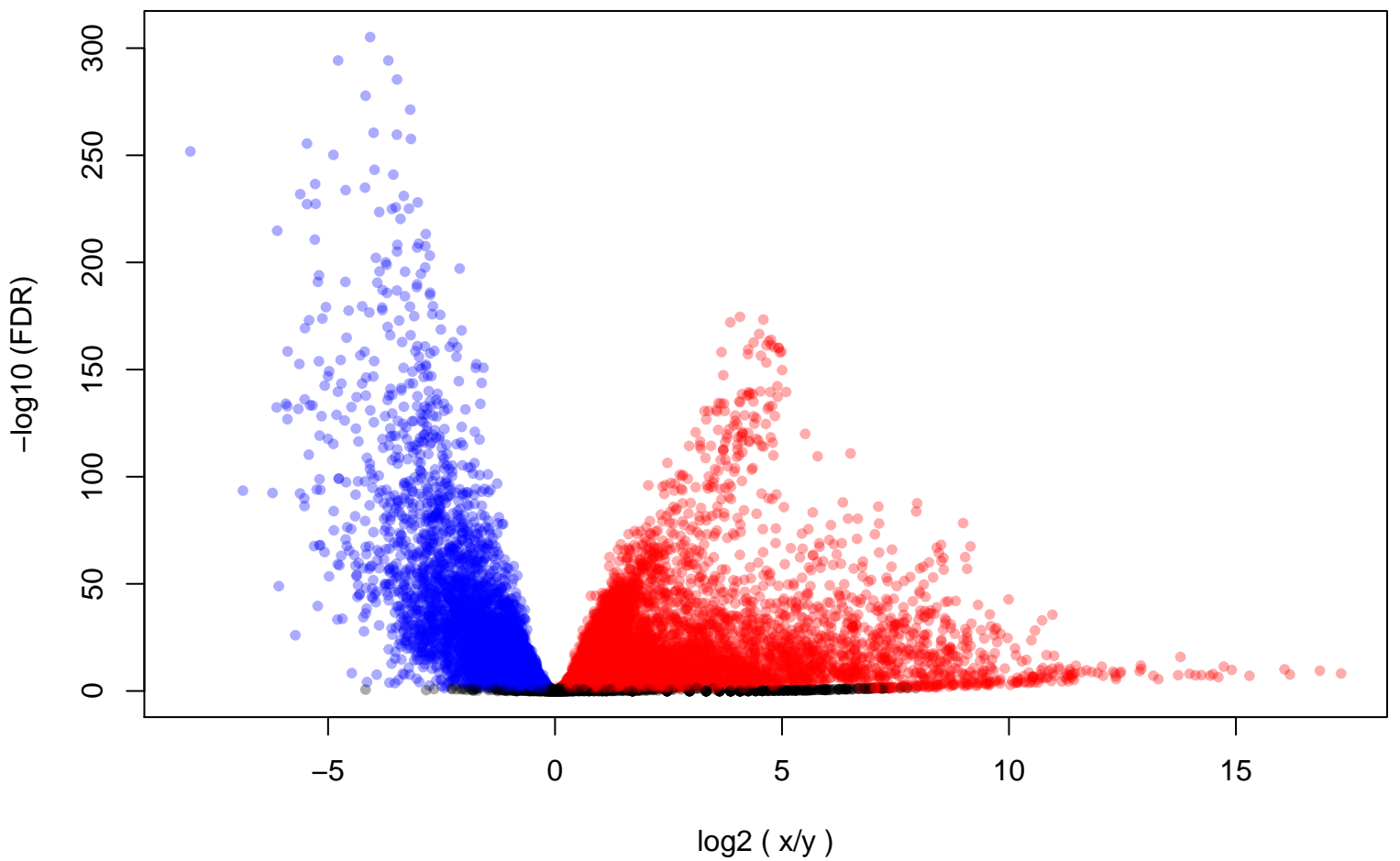
Distributions of log Counts



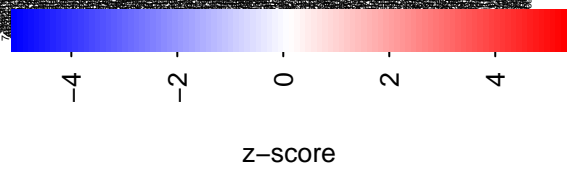
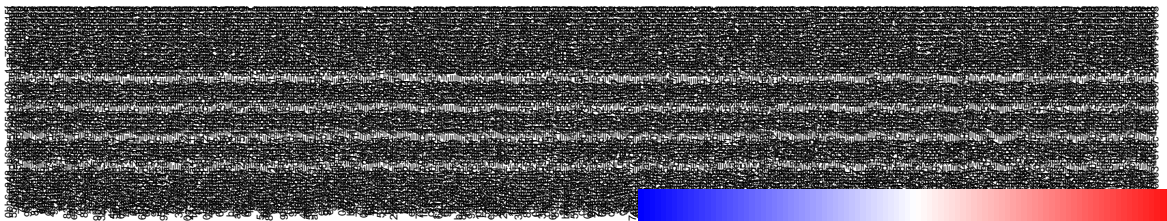
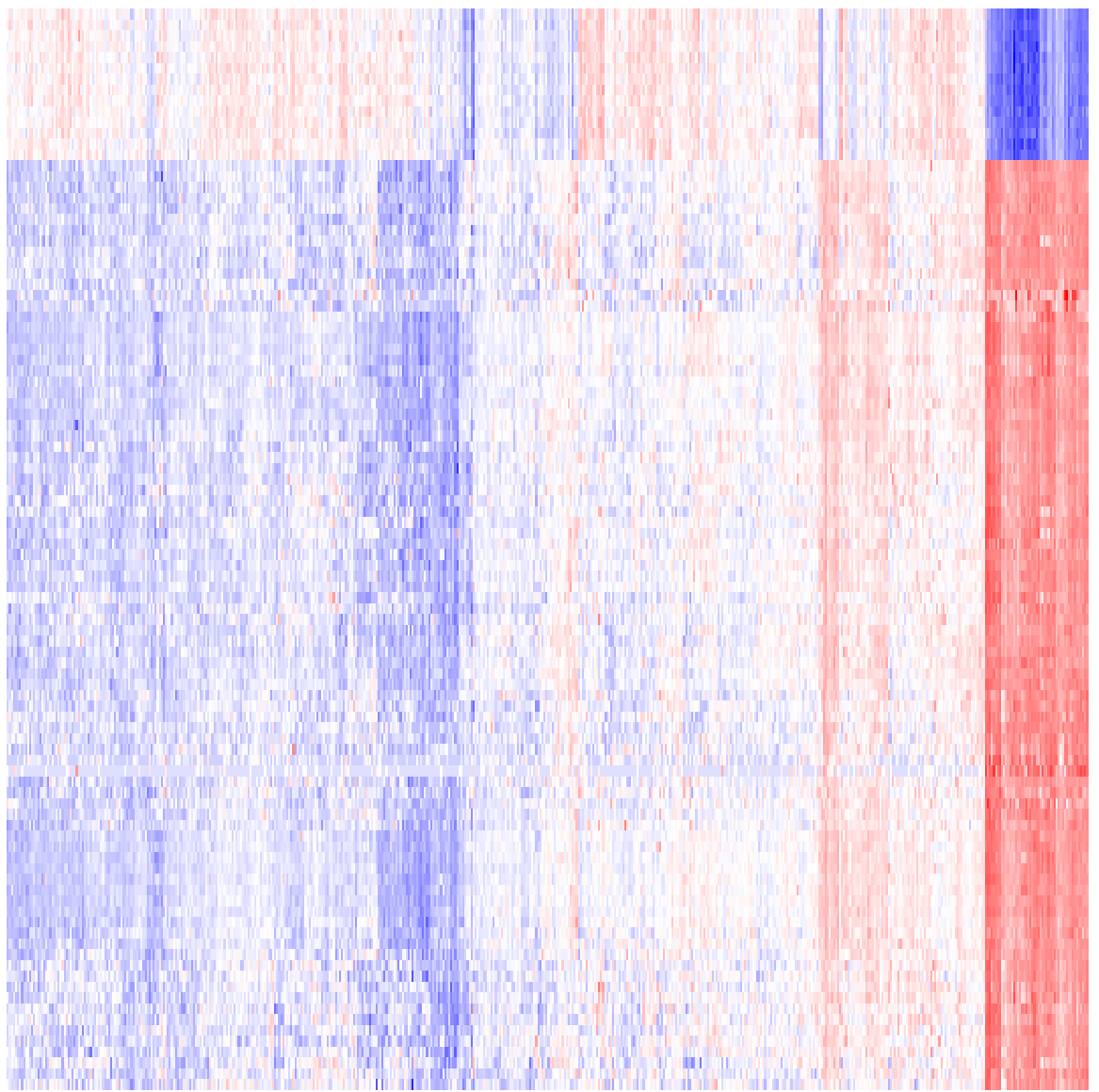
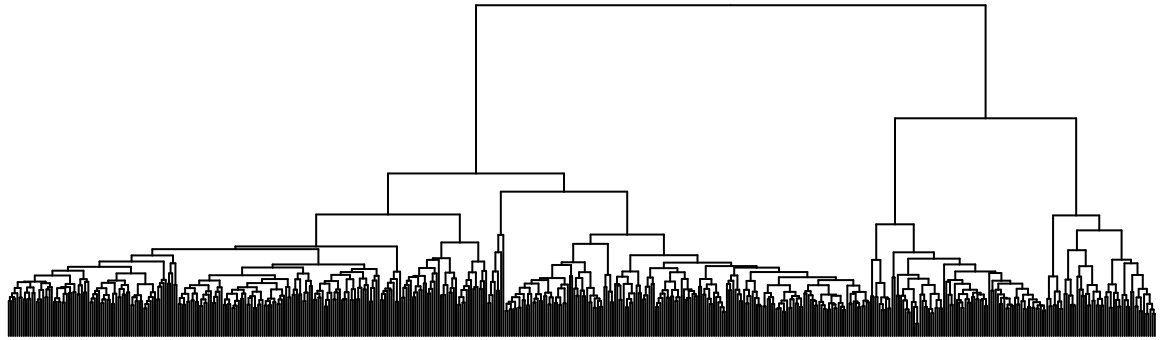
PCA for samples by Counts.norm (23% variability)



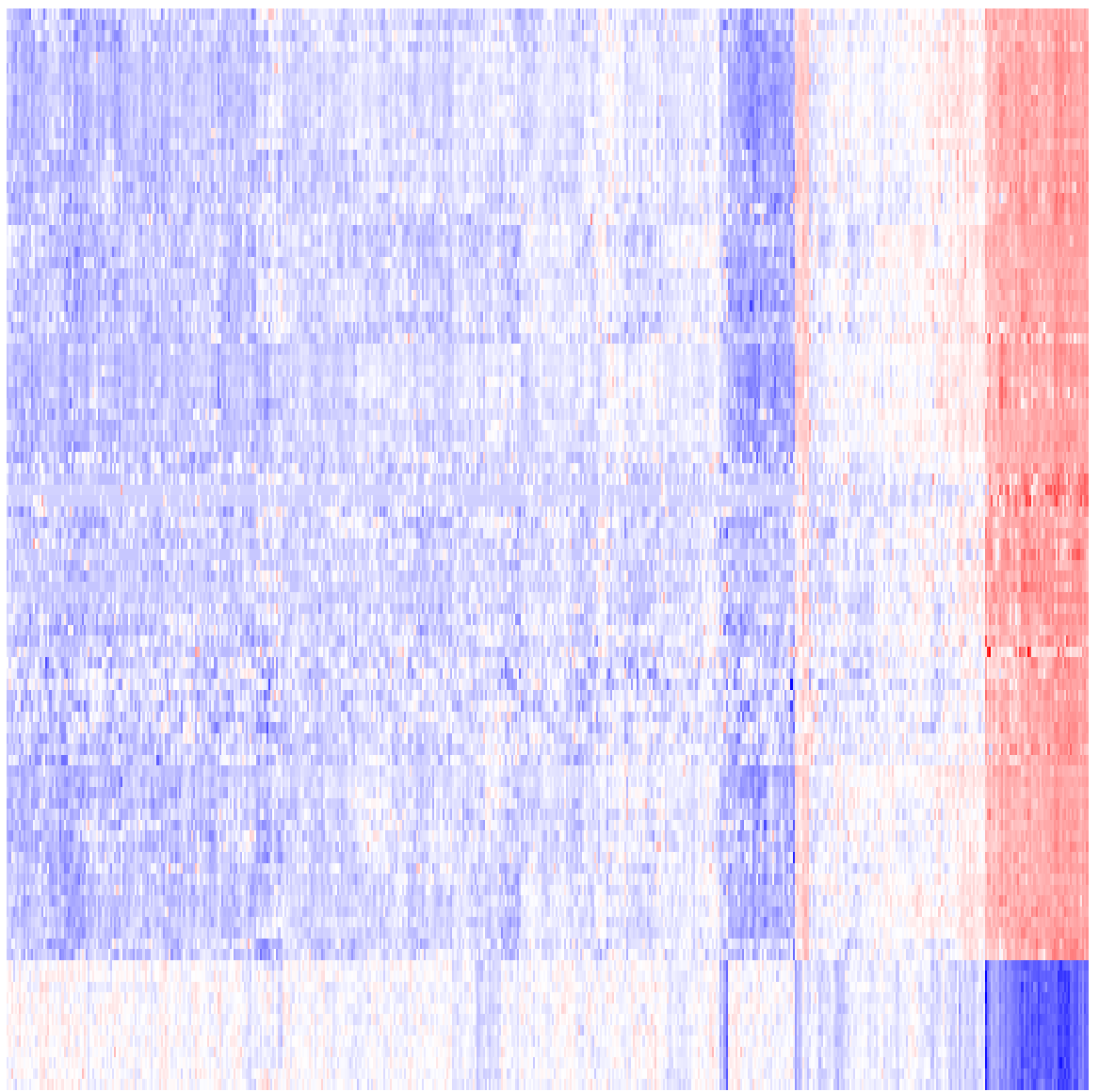
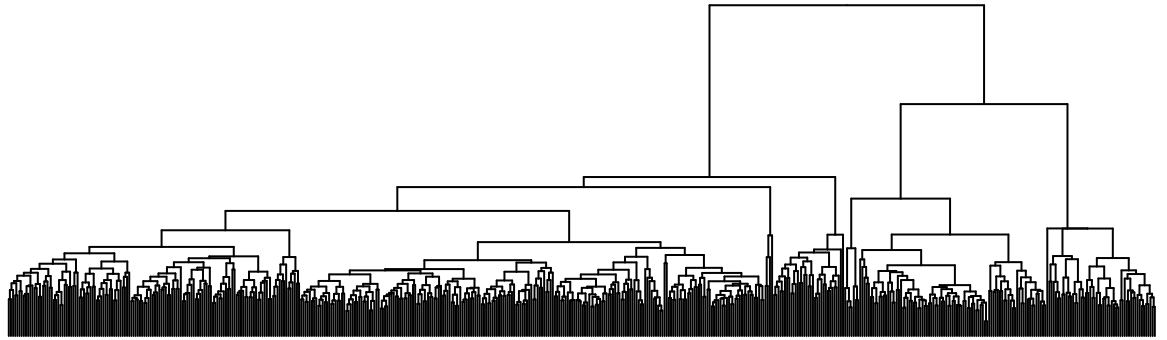
Volcano plot (counts)



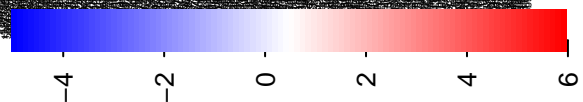
Top 100 genes (log2 counts)



Top 100 genes (log2 counts.norm)

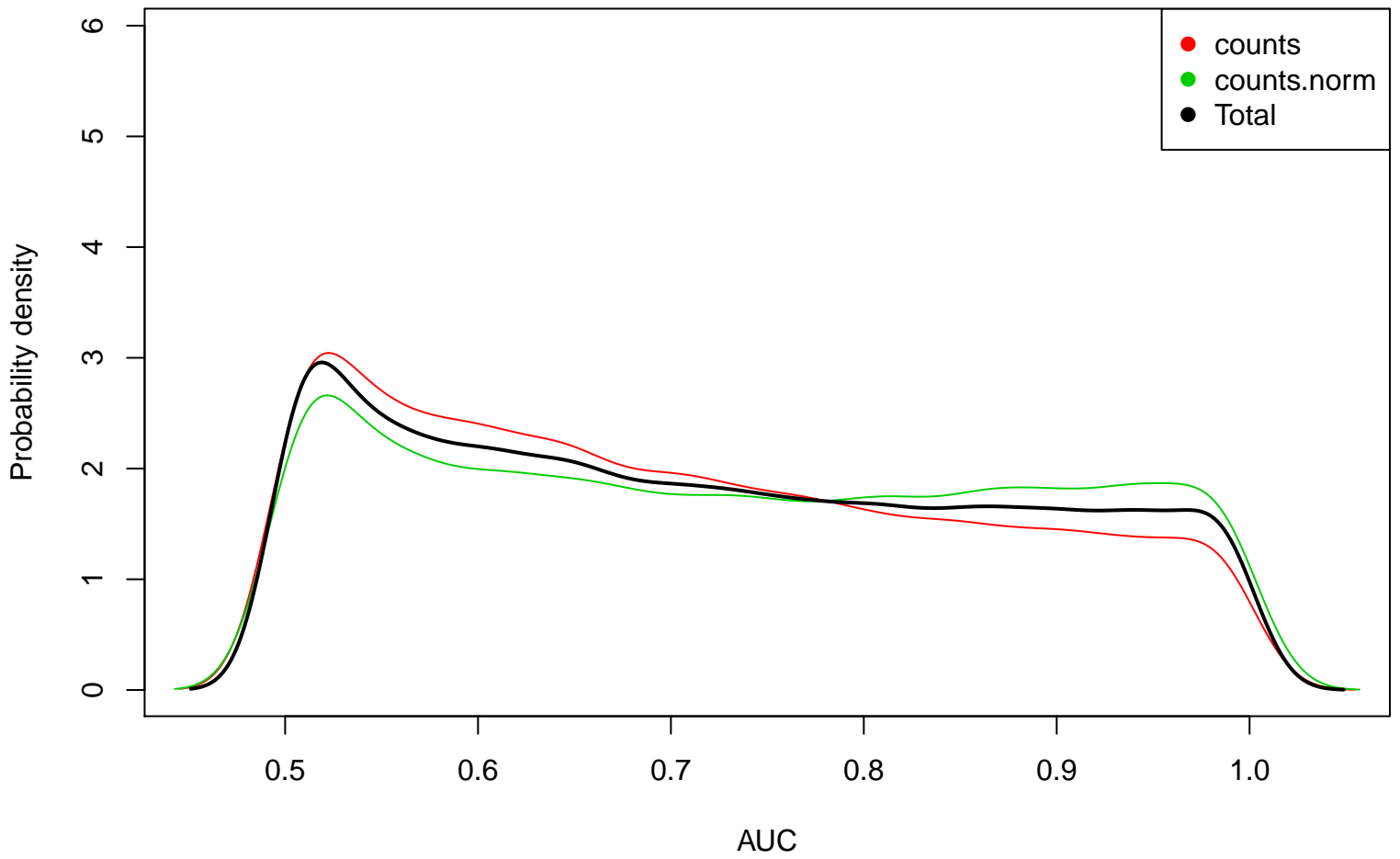


- CD302
- SLC39A8
- GIMAP8
- LYVE1
- TEK
- LD82
- ESAM
- CLEC14A
- S1PR1
- MYO11
- PECAM1
- ACVRL1
- ECSCR
- SH2B3C
- USHBP1
- KANK3
- SOX17
- RAMP3
- RAMP2
- LOC158376
- AGER
- GGTLC1
- CLIC5
- SUSD2
- NOSTRIN
- FHL5
- EDNRB
- EMCN
- HIGD1B
- FON3
- FRG4
- ROBO4
- CDH5
- ARHGGEF15
- FCDH12
- CD34
- VWF
- NPR1
- GPR116
- DLC1
- PTPRB
- FHL1
- GPR146
- CASP12
- CAS3
- OTC
- F8
- C13orf59
- HSD17B6
- GPA33
- ANGPT4
- GPD1
- C13orf15
- AGRP
- RS1
- LRRC36
- RTKN2
- GCOM1
- SECISBP2L
- ITLN1
- PRKCE
- VIPR1
- ENP2
- SNX25
- WWC2
- LMOT
- SPTBN1
- EPAS1
- CSRNP1
- PTPN21
- A2M
- TCF21
- AOC3
- KANK2
- RSPO1
- TNS1
- LIMS2
- HSPA12B
- TENC1
- CCDC48
- TNKS
- ADAMT58
- GPIHBP1
- FAM107A
- INMT
- CLEC3B
- PRX
- SEMA3G
- KIF23
- CCNB2
- KIF2C
- UBE2C
- TROAP
- HJURP
- PLK1
- CDCA5
- TPX2
- KIF4A
- TTK
- NEK2

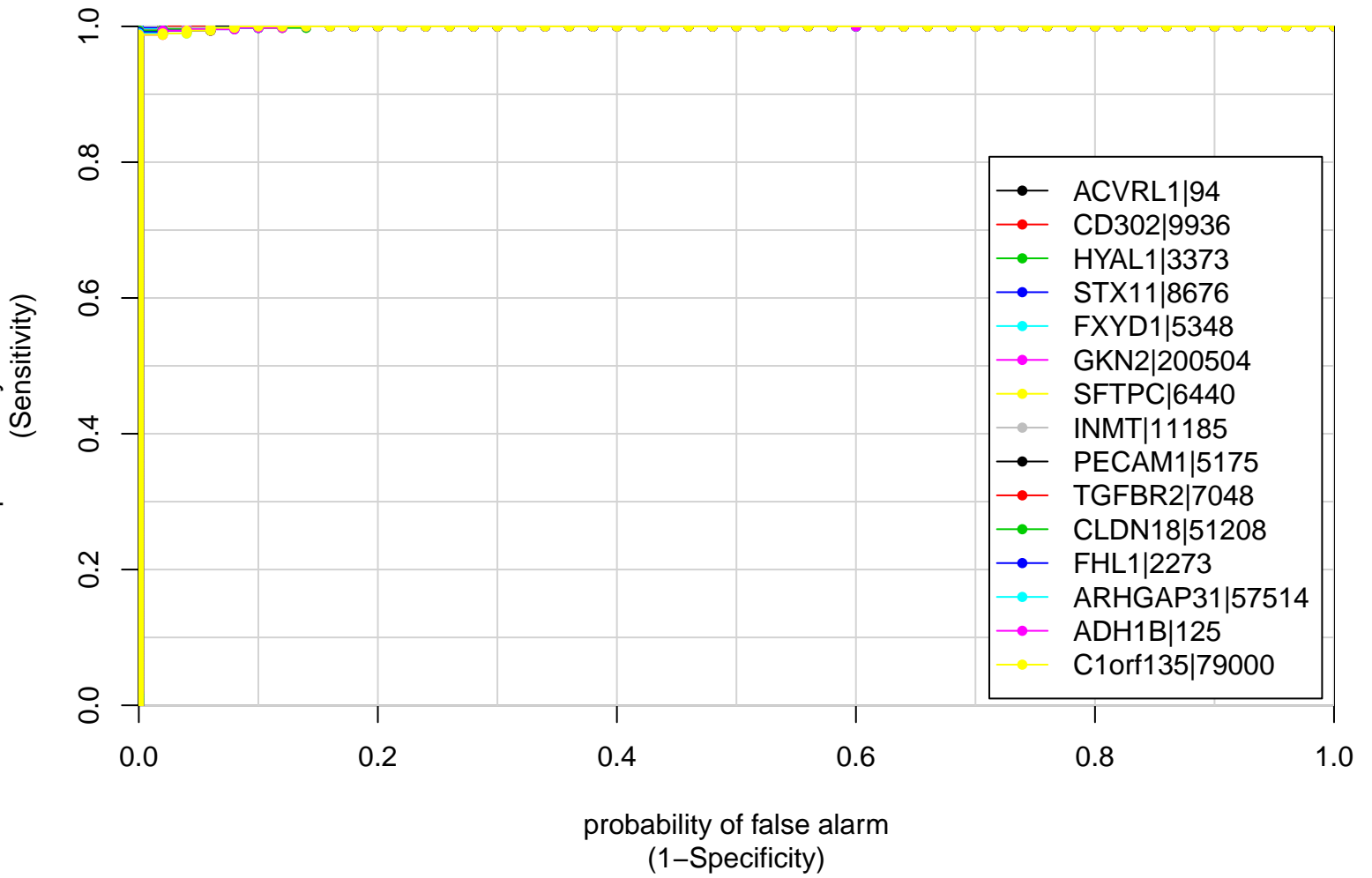


z-score

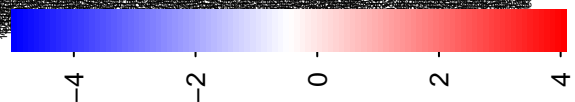
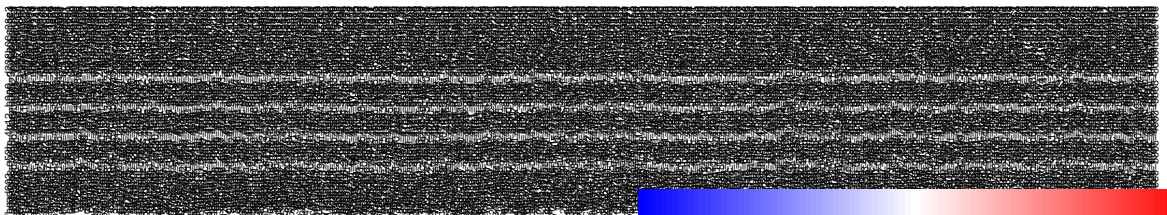
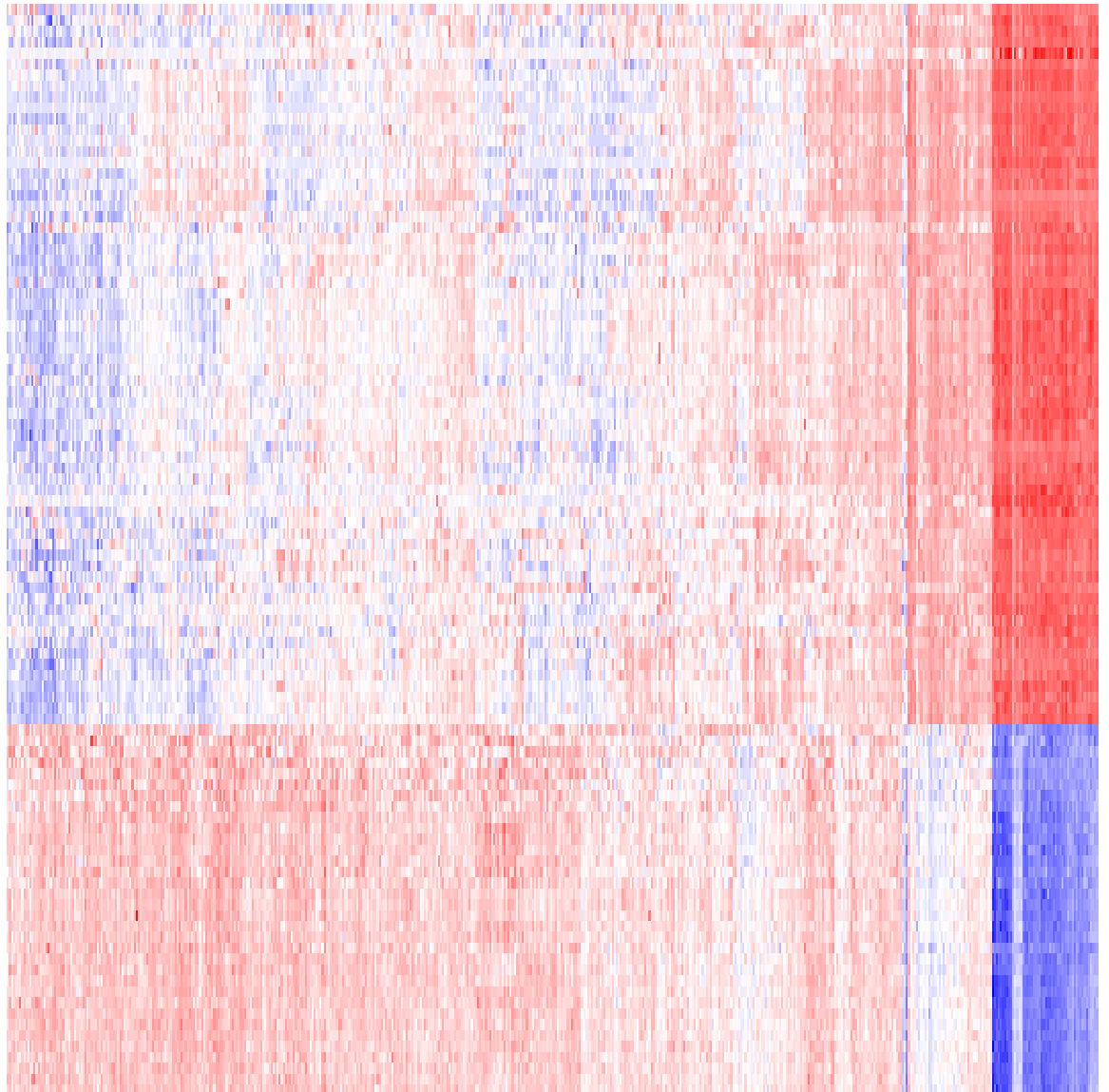
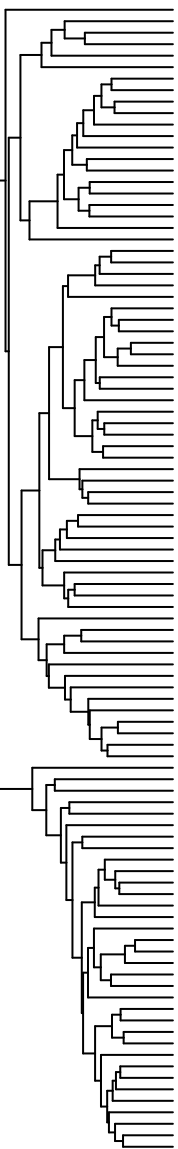
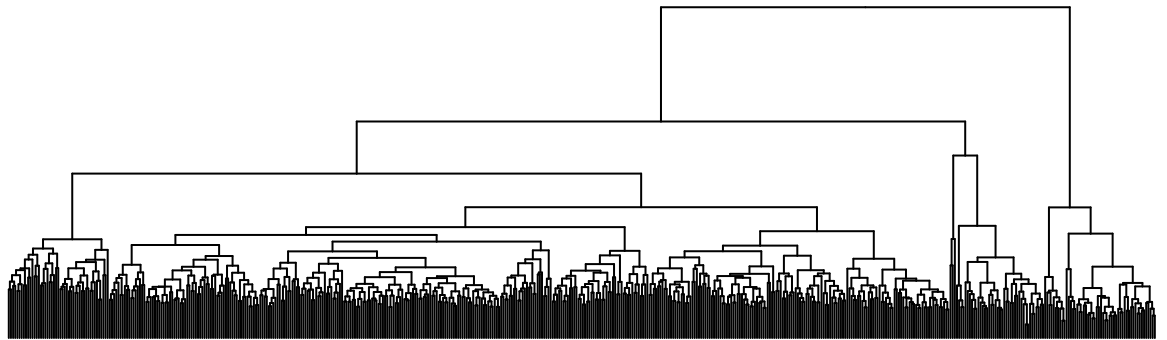
P.D.F.



ROC Curves



Top 100 genes (AUC, counts.norm)



Z-score